

'82 CHEVY TRUCKS



**CHEVY IS THE POWER
IN TRUCKS.**

NEW CHEVY S-10. THERE'S NEVER BEEN A TRUCK LIKE IT BEFORE.

The design for the new Chevy S-10 Pickup began with an all-out commitment to quality. That commitment now results in a totally new ownership experience for the American pickup buyer. A new size. New interior room. An available payload capacity up to 1500 lbs. An optional 2.8 Liter V6 engine. Optional 5-

speed manual overdrive transmission (available after February, 1982). Power to tow up to 4000 lbs. when properly equipped. New manufacturing techniques. New advanced paint processes. And the most extensive anti-corrosion measures in Chevrolet history. New Chevy S-10. A design. A commitment. A reality, at last.

A WORD ABOUT ENGINES. Some Chevrolets are equipped with engines produced by other GM divisions, subsidiaries, or affiliated companies worldwide. See your dealer for details.

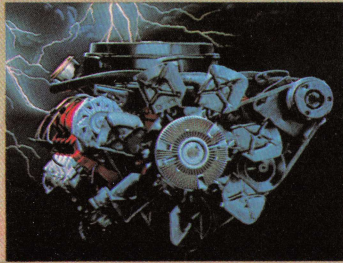
The right is reserved to make changes at any time, without notice, in prices, colors, materials, equipment, specifications and models. Check with your Chevrolet dealer for complete information.



Optional Sport interior.



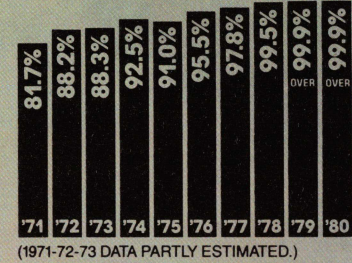
NEW CHEVY PICKUP. AMERICA'S GOING DIESEL. AND CHEVY'S GOT WHAT IT TAKES.



Today's trend toward diesel power in light-duty trucks finds Chevy in the forefront. For 1982, Chevy introduces an all-new 6.2 Liter Diesel engine. A diesel engine designed specifically for trucks. This new V8 engine has a displacement of 6.2 liters (379 cu. in.) and is rated at 130 SAE net

HP. It features rugged V8 construction for a variety of applications in C and K 10-20 and 30 Series models. Match a rugged Chevy Pickup with rugged diesel power and you've got a great combination for the tough years ahead.

A tough record to beat. 94.0% of Chevy Light-, Medium-, Heavy-Duty trucks and commercial vans in the ten most recent years recorded were still on the job. (Based on R.L. Polk & Co. model year registrations through July 1, 1980. 1981 statistics not available at time of printing.)



C20 Diesel Pickup. Light Bronze Metallic and Almond.

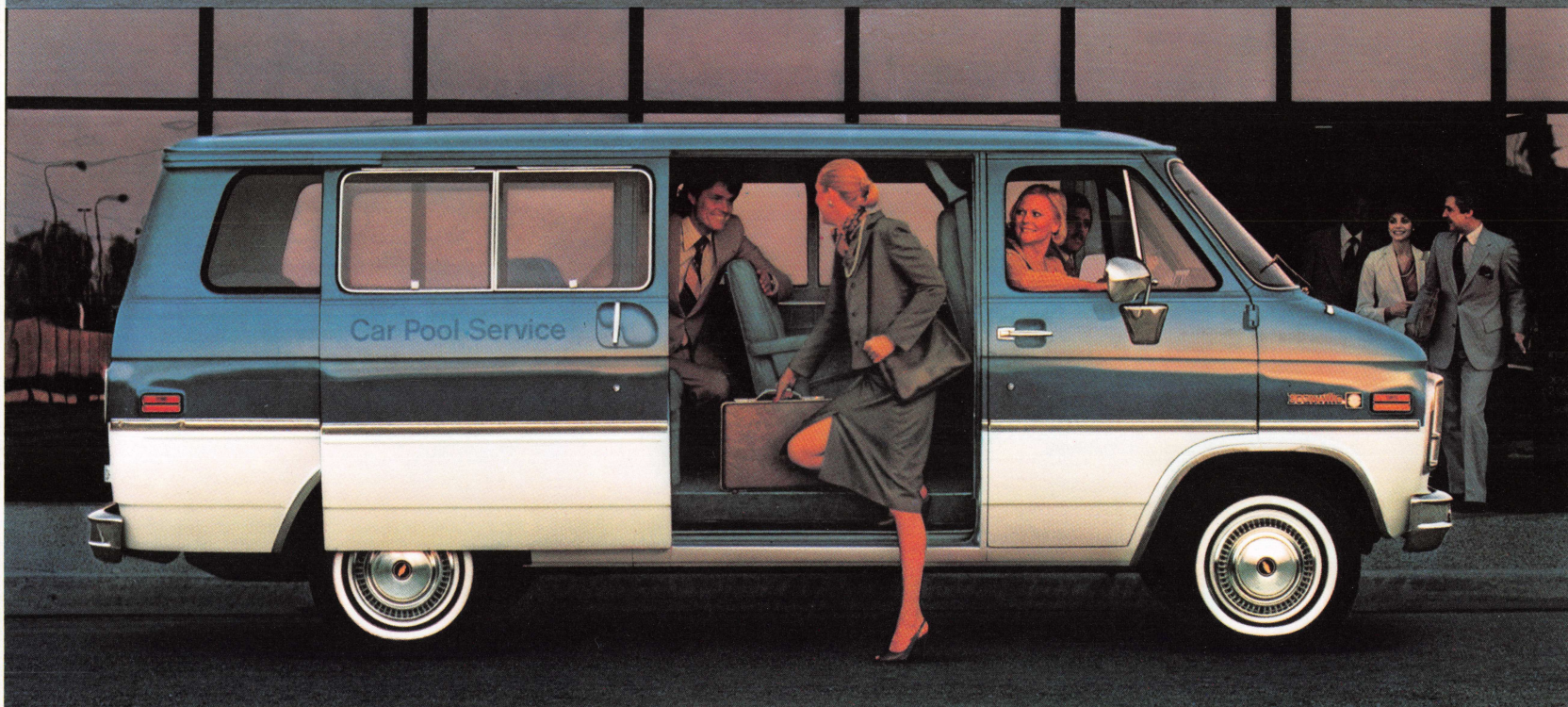
CHEVY VAN AND SPORTVAN.



For 1982, both Chevy Van and Sportvan feature seven new colors, a new "Smart Switch" which incorporates headlight dimmer, windshield wiper/washer and turn signal functions, and improved anti-corrosion measures. Plus steering-column-mounted ignition switch with steering lock. As always, Chevy Vans are built rugged and roomy with up to 296 cu. ft. of cargo space in back on the long-wheel-base models. And Chevy Sportvans are great people-carriers with seating available for up to 12 on G30 models.



Optional Beauville Sportvan interior



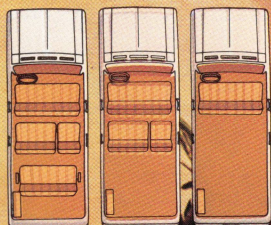
Top: Chevy Van. Light Jadestone and Frost White. (Available on special order). Bottom: Chevy Sportvan. Light Blue Metallic and Frost White.

CHEVY SUBURBAN. SUPER NEWS: NEW DIESEL POWER FOR THE SUPERWAGON.

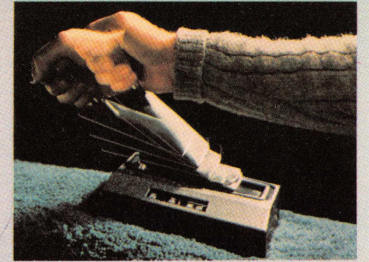
Take Chevy's amazing Superwagon. Capable of carrying up to nine people with optional seating. Or moving up to 15,500 lbs.* including itself, passengers, cargo and trailer, when properly equipped. Add on an exciting new 6.2 Liter Diesel engine, available on all models for 1982. Now sit back and enjoy a tough, roomy, versatile truck with some pretty impressive possibilities.

*C20 gasoline models only. 13,500 lbs. with 6.2 Liter Diesel.

Suburban's standard front bench seat is wide enough to handle three people, and the optional 2/3-1/3 split second seat offers room for three more. It can easily be folded down to create a cargo deck all the way to the tailgate. A removable third seat is also available.



CHEVY BLAZER. NEW DIESEL POWER FOR BLAZING NEW TRAILS.



The availability of the 6.2 Liter Diesel engine on K10 models* marks the introduction of a new animal — the Chevy 4WD Diesel Blazer. This rugged vehicle combines Blazer's proven tough-truck build with the rugged construction of the new diesel engine. Combine this with Blazer's 4-wheel-drive system with automatic locking front hubs. You'll have just what you need to carry you off and away from it all.

*Not available on C10 Blazers.

CHEVY EL CAMINO. THINK OF IT AS TWO VEHICLES FOR THE PRICE OF ONE.



El Camino interior.

A hardworking pickup with 35.5 cu. ft. of cargo space and gross payloads up to 1250 lbs., including cargo, equipment and passengers. A handsome vehicle with the appeal and style of a sporty mid-size car. Which is El Camino? Simply put, it's both. And this year El Camino offers new front-end styling, new low-drag front disc brakes and standard automatic transmission. It also offers a mighty attractive alternative to conventional pickups.



El Camino Conquista in Light Redwood Metallic and Redwood Metallic.

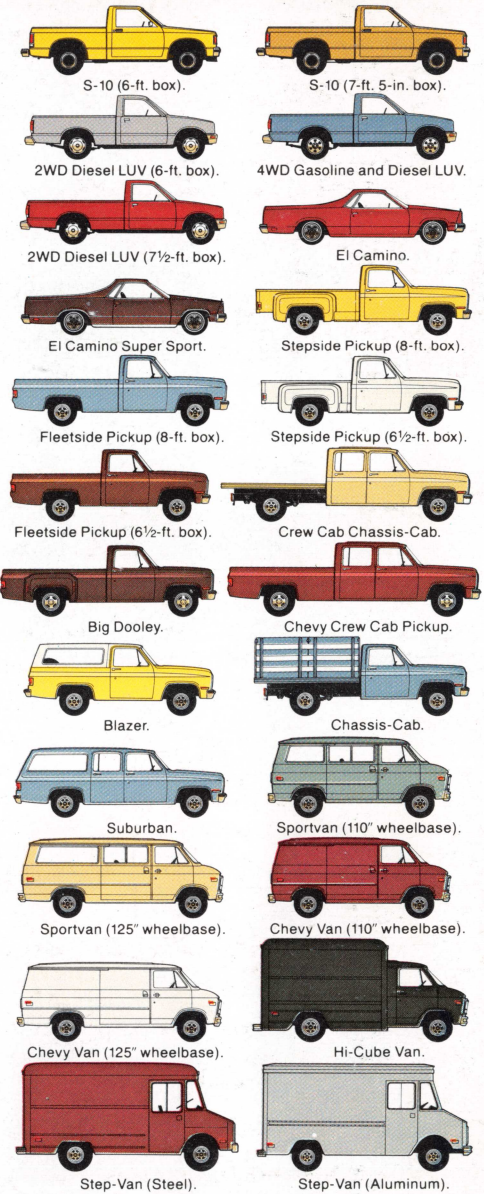
CHEVY LUV GOES DIESEL.



Chevy Series 12 LUV offers both diesel and gasoline power. A 2.2 Liter Diesel engine* is standard on all 2WD models, and on the 4WD model. The 4WD LUV with a 1.8 Liter gasoline engine is also offered. The 2.2 Liter Diesel features a Quick-On system which preheats the combustion chamber to help provide fast, reliable starting. In addition, an engine block heater helps assist cold-weather starting. And there's a 5-speed manual transmission standard with the 2WD Diesel LUV. Information regarding available options and components is available from your Chevy dealer.



Available Chevy light-duty truck models.



*Available in California after March, 1982. Chevy Series 12 LUV. Metallic Blue.

Check these catalogs or see a Chevy dealer for details on these Chevy trucks.

